



# 2024-2025 Annual Report

Morrow SWCD 430 W. Linden Way, PO Box 127 Heppner, OR 97836  
(541)676-5452

[www.morrowswcd.org](http://www.morrowswcd.org)

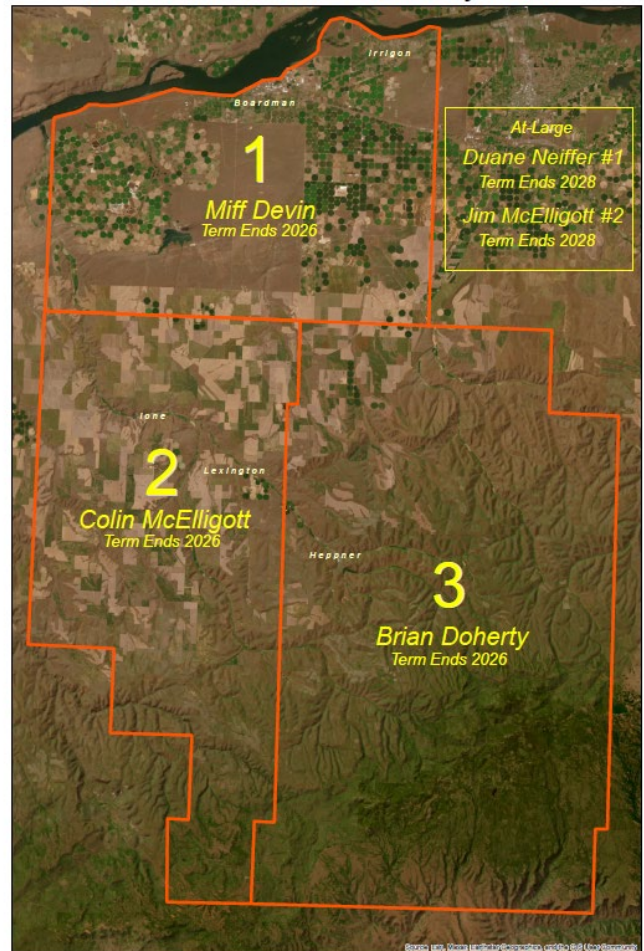
## Morrow SWCD Staff

District Manager: Kevin Payne

Natural Resource Program Manager: Jared Huddleston

Wildlife Habitat Technician: Jared Schiller

## Morrow SWCD Directors by Zone



Check us out on the web!



[www.morrowswcd.org](http://www.morrowswcd.org)

- Information on SWCD, NRCS and FSA Programs
  - Livestock District Maps, Hunting Unit Maps
- Links to help with Plant Identification, A-List Weeds
- Links for Weather, Market Prices, Stream Flows, SnoTel and many other sites!



5<sup>th</sup> grade students learned about Soils, Wildlife, Water Quality, Riparian Areas and Orienteering!



Oregon State University  
Extension Service



Ione School District  
Inspire Challenge Empower



• Review Report for the fiscal year ended June 30, 2025

FY July 1, 2024 - June 30, 2025

Beginning cash	180,190
Charges for service	75,787
Misc income	
Grants	598,129
Other	107
Interest	7,828
TOTAL	681,851

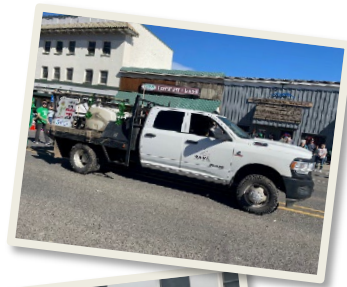
Expenses 697,490

Ending cash 167,587

Capital assets

Land	10,000
Bld, equip, &	160,349
Improve	

Change in Net Position (15,639)



*Note - Subsequent Event: The District billed Gilliam County SWCD for arial drone services on December 1, 2024 in the amount of \$30,000.00. This payment was issued to the District on September 23, 2025. Due to reporting in accordance with the cash basis of accounting this payment is not reflected in the basic financial statements. If this payment were reflected in the FYE 6/30/25, the District would report a positive change in net position of \$14,361.00.*

A financial review of all Morrow SWCD accounts has been completed by certified public accountants **Connected Professional Accountants, LLC**. A copy is available for review in the district office.

## Morrow County Grassland Restoration of Annual Grass-Invaded Habitat Project: PHASE II



The SWCD, with help from OWEB, ODFW and private landowners, treated nearly 3,500 acres of range/pasture with annual grass selective herbicide. The non-native grasses targeted were Medusahead (*Taeniatherum caput-medusae*), Ventenata (*Ventenata dubia*) and cheatgrass (*Bromus tectorum*). The District will submit a Phase II OWEB Large Grant in the hopes to treat additional acres.

# OWRD Feasibility Study Grant

Lower Willow Creek Managed Aquifer Recharge Project



The feasibility study by GSI Water Solutions found no fatal flaws in the potential to develop a managed aquifer recharge (MAR) project in the Lower Willow Creek Basin area (Morrow/Gilliam County) to improve the reliability of groundwater supplies for irrigation which is anticipated to provide economic and environmental benefits for both instream and out-of-stream water uses.

Morrow Soil and Water Conservation District and Gilliam County Soil and Water Conservation District will look to Phase II of this project to investigate the feasibility of constructing MAR facilities along lower Willow Creek.



## Community Wildfire Protection Corps

### Northwest Youth Corps

**The SWCD was excited to work with the Northwest Youth Corps on this project to provide defensible space work near structures at Blake Ranch. The crews treated a total of 16 acres on 11 different properties!**



**This project reduced wildfire risk through restoration of landscape resiliency and the reduction of hazardous fuels on small forestland properties.**



# Oregon Department of Forestry Small Forestland Grant Project (+)\*



This project reduces wildfire risk through restoration of landscape resiliency and the reduction of hazardous fuels on private small forestland properties in the form of defensible space work per Oregon State Fire Marshals office guidelines.

Stewardship crews follow site specific treatment plans to "Firewise" standards to include chipping, pruning, slash removal, and hazard tree mitigation.

Small forestlands to be treated are private land ownerships in the Blake Ranch, Cutsforth Park and Penland Lake areas in Morrow County. All of which are identified as high risk in the Morrow County Community Wildfire Protection Plan (MCCWPP).



This project supported small forestland owners in reducing wildfire risk by creating defensible space around structures within the Wildland Urban Interface (WUI) zones.



## \*UPDATE:

The SWCD was awarded additional funds that were unused by other projects around the State. An additional week of work was scheduled, and an extra 23 acres of defensible space work was completed!!!